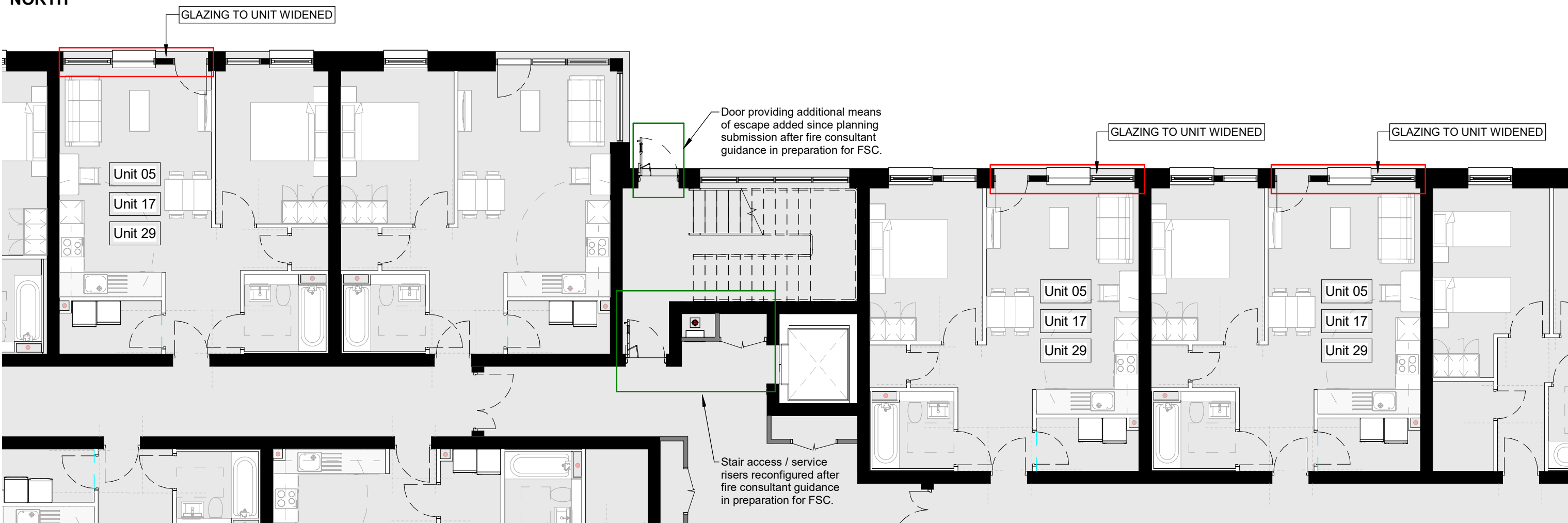




North Elevation - RFI Response
1 : 100



East Block - Typical Partial Floor Plan (L00 - L02)
1 : 100

Notes:

- Do not scale from this drawing. Use figured dimensions in all cases.
- Verify dimensions on site and report any discrepancies to the Architect immediately.
- This drawing to be read in conjunction with the Architect's Specification.
- © This drawing is copyright and may only be reproduced with the Architect's permission.

Drawing Notes:

UNITS / GLAZING MODIFIED AS PART OF RFI REPONSE OUTLINED IN RED

FIRE CONSULTANT RECOMMENDED CHANGES OUTLINED IN GREEN

Issues & Revisions			
Rev.	Date	Dwn	Details of Issue / Revision
P3	14.07.2025	AK	ISSUED FOR RFI RESPONSE

Douglas Business Centre,
Carrigaline Rd.,
Douglas, Cork,
T12 P0B8
T: + 353 (0)21 436 2922
W: www.reddyarchitecture.com
E: info@reddyarchitecture.com

Client Details:
The Land Development Agency (LDA)

Project Details:			
LDA Wilton, Sarsfield Road LRD Lands Adjoining the ESB Networks DAC Office, at Farrandahadore More, Sarsfield Road, Wilton Cork City			
Job No: P23-081C	Sheet Size: A1_L	Scale @A1: 1 : 100	Status: P3
Issue Date: JULY 2025	Drawn By: A. Keniry	Reviewed By: P. Mulligan	Purpose of Issue: RFI RESPONSE
Project - System - Spatial Zone - Level - Type - Originator - Role - Number			Revision: WLT-06-EB-XX-DR-AU-AR-1701 P3

Drawing Title:			
East Block - RFI Response			
Status: P3 Purpose of Issue: RFI RESPONSE			
Project - System - Spatial Zone - Level - Type - Originator - Role - Number			Revision: WLT-06-EB-XX-DR-AU-AR-1701 P3